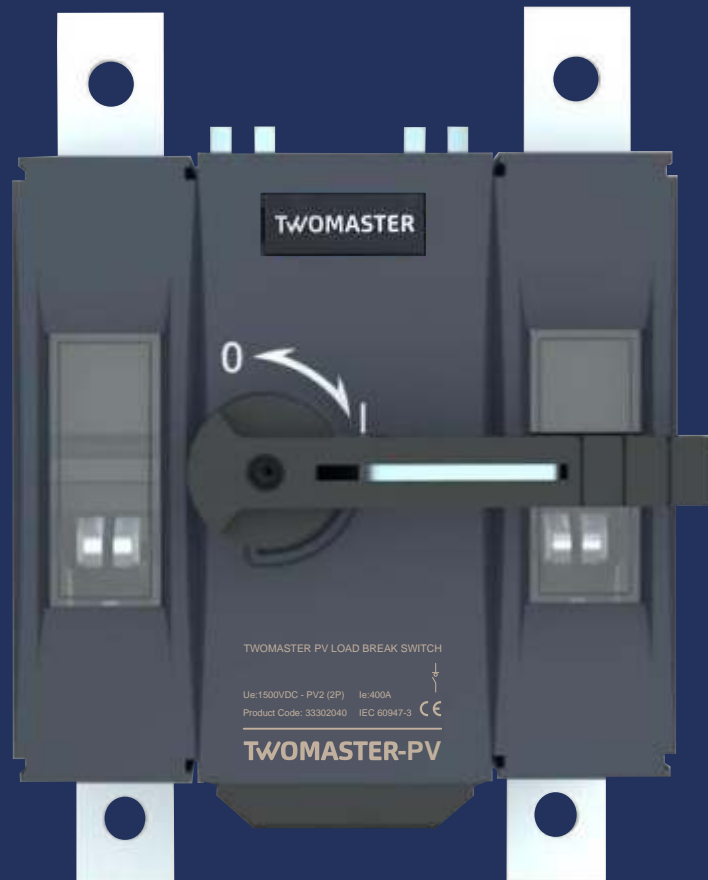


TWOMASTER

PV Load Break Switches

80-1250A

1000-1500VDC



TWOMASTER PV Series

Product Description

TWOMASTER PV series switch-disconnector is using the modular concept. The switch body adopts the special module assembly and the new appearance design to reduce the exposed metal parts of the switch body and improve the safety operating performance of the switch. The modular design facilitates the assembly and disassembly of the switch, and is suitable for different use requirements and occasions.

TWOMASTER PV series switch-disconnector is fit for AC 50/60Hz. Its rated working voltages are AC380V, AC690V, AC800V, AC1000V, DC1000V, DC1500V and the rated working current of 80A-1250A in the low-voltage distribution network can meet the loaded power-on and break the corresponding rated current, at the same time, it can also endure the overload current in the circuit in a short time.

TWOMASTER PV series switch-disconnector can be used for main power switches, isolating inspection switches and emergency stop switches of building construction, power, photovoltaic and petrochemical industries and factories, etc.

Compliance standards

National standards

GB/T 14048.1 Low-voltage Switchgear and Controlgear-General Rules

GB/T 14048.3 Low-voltage Switchgear and Controlgear -Switches, Disconnectors, Switch-disconnectors and Fuse-combination Units

International standards

IEC 60947-1 Low-voltage Switchgear and Controlgear- General Rules

IEC 60947-3 Low-voltage Switchgear and Controlgear -Switches, Disconnectors, Switch-disconnectors and Fuse-combination Units Equipment Certification

PV series switch-disconnector has passed CCC, RoHS and CE standard certifications.

Product Code



004-40A ; 006-63A ; 008-80A ;
010-100A ; 012-125A ; 016-160A
020-200A ; 025-250A ; 031-315A
040-400A ; 050-500A ; 063-630A
080-800A ; 100-1000A ; 120-1250A

2-2Poles ; 3-3 Poles ; 4-4 Poles

0-Front opr. ; 1-Side opr.

1-400VAC ; 2-1000VAC. ; 3-1500VDC ; 4-1000VDC

1-DC ; 2-AC ; 3-PV

LBS

TWOMASTER PV Series

Product parameter



Conventional thermal current (A)		160	250	630	1250
Rated operating voltage (V)		DC1000 DC1500		DC1000 DC1500	
Rated operating current (A)		80,100,125,160	200,250	315,400,500,630	800,1000,1250
Number of poles		2P/3P/4P			
Rated impulse withstand voltage Uimp (kV)		12			
Rated insulation voltage Ui (V)		1500			
Usage category	DC1000V	DC -PV2(2P)	DC -PV2(2P)	DC -PV2(2P)	DC -PV1(2P)
	DC1500V	DC -21 B(3P) DC -PV2(4P)	DC -21 B(3P) DC -PV2(4P)	DC -21 B(3P) DC -PV2(4P)	DC -21A(3P) DC -PV1(4P)
Rated short circuit making capability Icm (kA peak)	DC 1500V	5	7	10	40
Rated short -time withstand current Icw	DC 1500V	10kA/1s	10kA/1s	20kA/1s	40kA/1s
Mechanical life (times)		7800	7800	4800	2900
Electrical life (times)		200	200	200	100
Tightening torque with terminal (Nm)		15-22	15-22	50-75	50-75
Operating altitude		<2000 m			
Operating temperature		-45°C - + 70°C			
Pollution level		Level 3			
Protection level		IP20			
Weight(kg)	3 poles	1.7	1.9	6.5	15.8
	4 poles	2.3	2.5	7.7	19.3



NEW

TWOMASTER PV Series

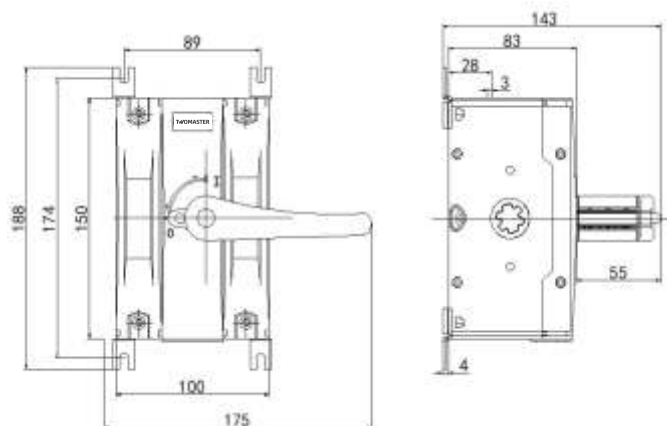
Product parameter



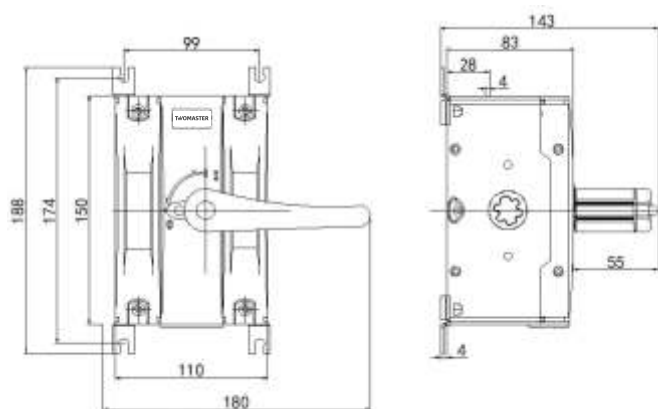
Conventional thermal current (A)		500
Rated operating voltage (V)		DC1500
Rated operating current (A)		200 250 315 400 500
Number of poles		2P
Rated impulse withstand voltage Uimp (kV)		12
Rated insulation voltage Ui (V)		1500
Usage category	DC 1500V	DC-PV2
Rated short circuit making capability Icm (kA peak)	DC 1500V	10
Rated shorttime withstand current Icw	DC 1500V	10kA/1s
Mechanical life (times)		4800
Electrical life (times)		200
Tightening torque with terminal (Nm)		50-75
Operating altitude		<2000 m
Operating temperature		-45°C- + 70°C
Pollution level		Level 3
Protection level		IP20
Weight(kg)	2 poles	6.6

TWOMASTER PV Series

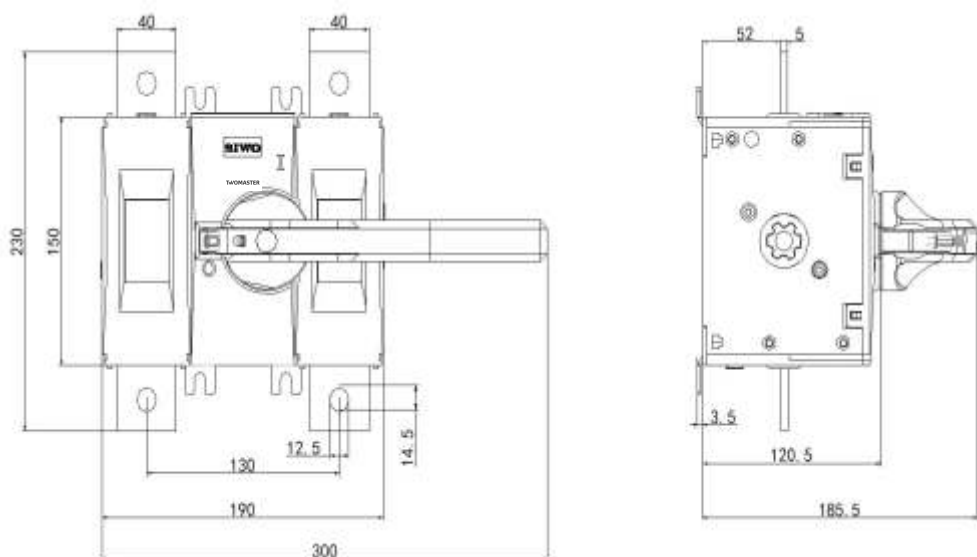
1000VDC / 160A / 2P



1000VDC / 250A / 2P

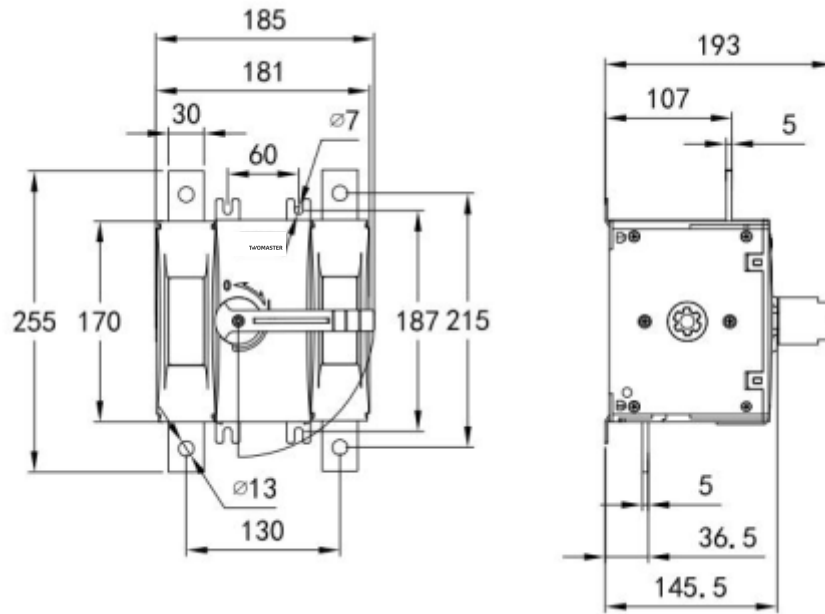


1000VDC / 315...630A / 2P

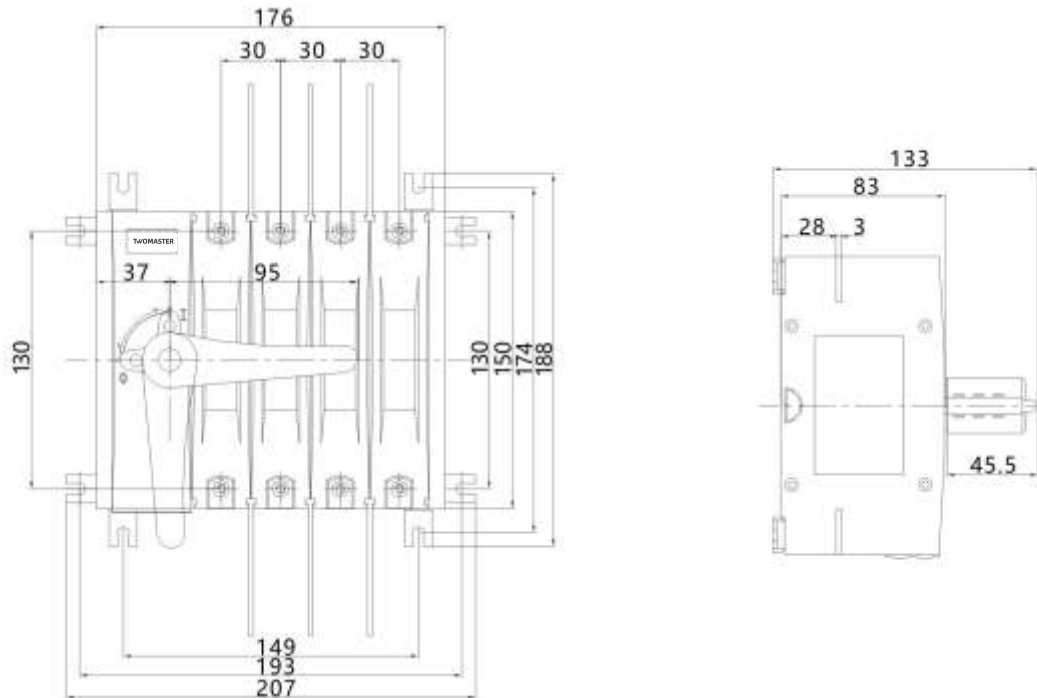


TWOMASTER PV Series

1500VDC / 200...500A / 2P

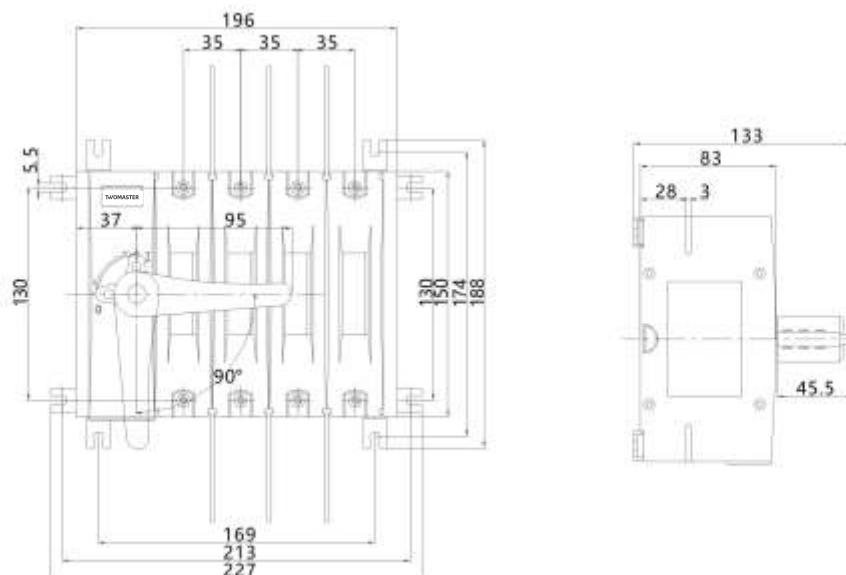


1500VDC / 160A / 4P

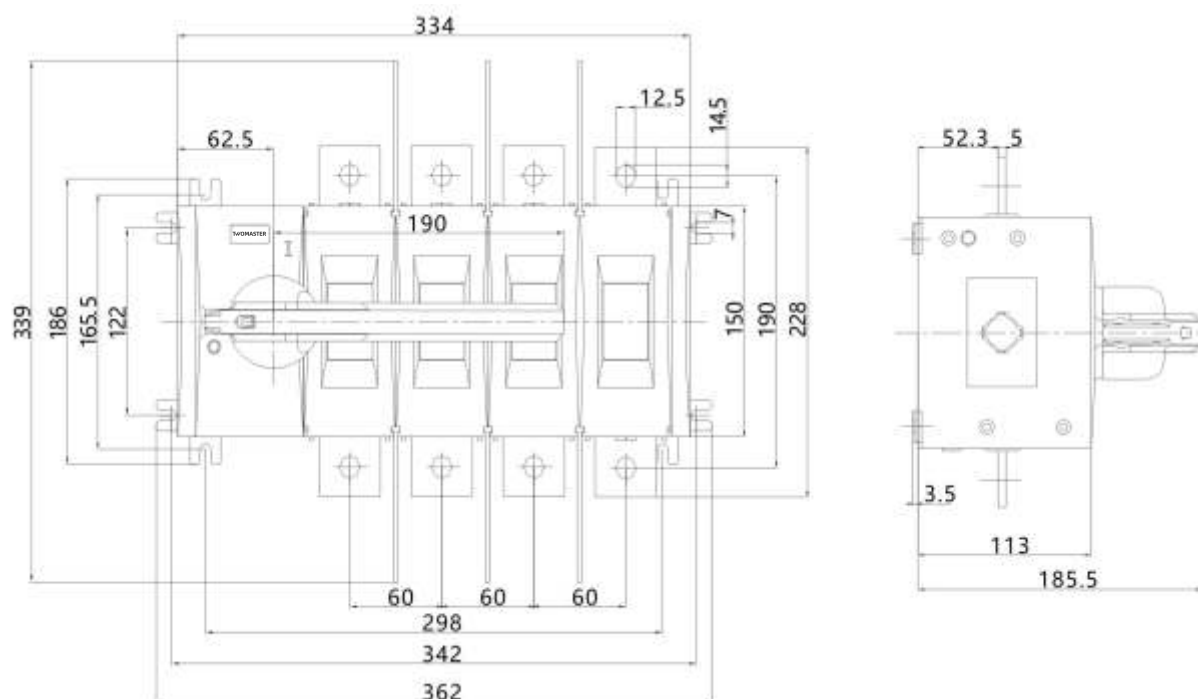


TWOMASTER PV Series

1500VDC / 250A / 4P



1500VDC / 315...630A / 4P



TWOMASTER

manages the energy



OSSA

manages the energy

vedik OSB Melih Gökçek Bulvarı Eminel Merkezi

No:18/101 Yenimahalle / ANKARA / TÜRK YE

Tel : +90 312 394 6772 / +90 312 394 OSSA

Fax : +90 312 394 6771

Email : info@twomaster.com.tr

Web : www.twomaster.com.tr